

VORSA TRACK 40 SPOT WHITE 0-10V 2024  
SLVT4S015AN2

LUMINAIRE REF:

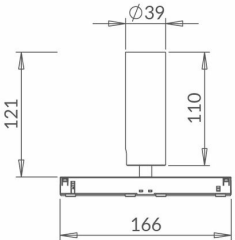
PROJECT REF:



BLACK RAL 9005

The updated Vorsa Track 40 is a versatile mini "click and fit" track-mounted directional spotlight. It has been re-engineered for 2024 with a cleaner aesthetic, an increased light output and an industry-leading light output at 98 CRI. Interchangeable optics allow for a range of beam distributions, all easy to fit on-site. Its track architecture facilitates easy changing between different size Vorsa heads when commissioning a scheme. We have introduced a new innovative screwless self-supporting tilt mechanism. This fitting is ideal for use in areas of key areas of the home and is perfect for use on beams and concrete ceilings where recessed fittings are unsuitable. The Vorsa Track 40 can be used on a range of Stucchi track systems including recessed, surface mounted and suspended. Please ask for full details. The range has been built to the principles of the circular economy to not only maximise resources but also to reduce waste and environmental impact.

Rotation 355° 90° Tilt



ACCESSORIES



VORSA 40  
HONEYCOMB  
INSERT Ø33MM X  
3MM  
ACHCVO402



VORSA 40 SAND  
BLASTED GLASS  
INSERT Ø33MM X  
3MM  
ACSGVO402



VORSA 40 HIGH  
TRANSMISSION  
SOFTENING GLASS  
INSERT Ø33MM X  
3MM  
ACSLVO402



VORSA STANDARD  
EVO TRACK  
WHITE - 1M/2M  
SLVTF1012/2012



VORSA STANDARD  
EVO TRACK BLACK  
- 1M/2M  
SLVTF1022/2022



VORSA RECESSED  
EVO TRACK BLACK  
- 1M/2M  
SLVTR1022/2022



VORSA  
SUSPENDED  
TRACK WHITE -  
1M/2M  
SLVTW1012/2012



VORSA  
SUSPENDED  
TRACK BLACK -  
1M/2M  
SLVTW1022/2022



WWW.JOHN CULLEN LIGHTING.COM

UK +44 (0) 20 7371 9000 | Middle East & APAC +971 (0) 4 321 114 | Europe +33 (0)9 61 68 22 81



VORSA TRACK 40 SPOT WHITE 0-10V 2024

SLVT4S015AN2

LUMINAIRE REF:

PROJECT REF:

SPECIFICATION	SPOT
BEAM ANGLE (°)	9°
LED SOURCE LUMENS (LM)	486
LUMINAIRE LUMENS (LM)	225
INTENSITY RATING (CD)	3990
POWER CONSUMPTION (W)	6
LUMINAIRE EFFICACY (LM/W)	38
DRIVE CURRENT (mA)	N/A
FORWARD VOLTAGE (V DC)	N/A

TM66	2.3 (LIA Assured Verification Score)
INGRESS RATING	IP20
IMPACT RATING	IK03
COMPLIANCE	IEC 60598-1:2020
	IEC 60598-2-1:2020

COLOUR TEMPERATURE	2700K
CIE CRI AVAILABLE AS	>95 Ra
IES TM-30 COLOUR FIDELITY (Rf)	>95
IES TM-30 COLOUR GAMUT (Rg)	≈100
BINNING	2-step
LIFETIME L70/B10 (HOURS)	>50000
AMBIENT TEMPERATURE (Ta)	-20 ... +25 °C

ELECTRICAL	
SOURCE TYPE	LED
PRODUCT CLASS	Class III (SELV low voltage)
DIMMING PROTOCOL	0-10V dimmable

OTHER DATA	
CABLE TYPE	FEP (200 °C)
CABLE SIZE	N/A
CABLE LENGTH	N/A
CONNECTOR TYPE	Track Adapter
WEIGHT	250
FIRE RATED	N/A

