

VORSA TRACK 40 WIDE WHITE DALI 2024

SLVT4W015DA2

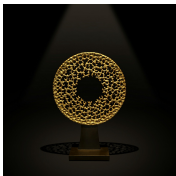
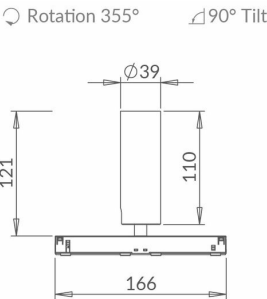
LUMINAIRE REF:

PROJECT REF:



WHITE RAL 9003

The updated Vorsa Track 40 is a versatile mini "click and fit" track-mounted directional spotlight. It has been re-engineered for 2024 with a cleaner aesthetic, an increased light output and an industry-leading light output at 98 CRI. Interchangeable optics allow for a range of beam distributions, all easy to fit on-site. Its track architecture facilitates easy changing between different size Vorsa heads when commissioning a scheme. We have introduced a new innovative screwless self-supporting tilt mechanism. This fitting is ideal for use in areas of key areas of the home and is perfect for use on beams and concrete ceilings where recessed fittings are unsuitable. The Vorsa Track 40 can be used on a range of Stucchi track systems including recessed, surface mounted and suspended. Please ask for full details. The range has been built to the principles of the circular economy to not only maximise resources but also to reduce waste and environmental impact.



WIDE

ACCESSORIES

|   |   |   |   |   |  |   |   |
|---|---|---|---|---|--|---|---|
|  |  |  |  |  |  |  |  |
| VORSA 40 HONEYCOMB INSERT Ø33MM X 3MM<br>ACHCVO402                                  | VORSA 40 SAND BLASTED GLASS INSERT Ø33MM X 3MM<br>ACSGVO402                         | VORSA 40 HIGH TRANSMISSION SOFTENING GLASS INSERT Ø33MM X 3MM<br>ACSLVO402          | VORSA STANDARD EVO TRACK WHITE - 1M/2M<br>SLVTF1012/2012                            | VORSA STANDARD EVO TRACK BLACK - 1M/2M<br>SLVTF1022/2022                            | VORSA RECESSED EVO TRACK BLACK - 1M/2M<br>SLVTR1022/2022                             | VORSA SUSPENDED TRACK WHITE - 1M/2M<br>SLVTW1012/2012                                 | VORSA SUSPENDED TRACK BLACK - 1M/2M<br>SLVTW1022/2022                                 |

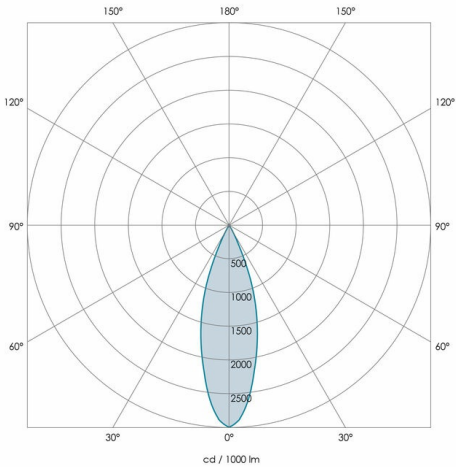


VORSA TRACK 40 WIDE WHITE DALI 2024  
SLVT4W015DA2

LUMINAIRE REF:

PROJECT REF:

| SPECIFICATION             | WIDE |
|---------------------------|------|
| BEAM ANGLE (°)            | 33°  |
| LED SOURCE LUMENS (LM)    | 680  |
| LUMINAIRE LUMENS (LM)     | 480  |
| INTENSITY RATING (CD)     | 1430 |
| POWER CONSUMPTION (W)     | 9    |
| LUMINAIRE EFFICACY (LM/W) | 53   |
| DRIVE CURRENT (mA)        | N/A  |
| FORWARD VOLTAGE (V DC)    | N/A  |
|                           |      |
|                           |      |
|                           |      |

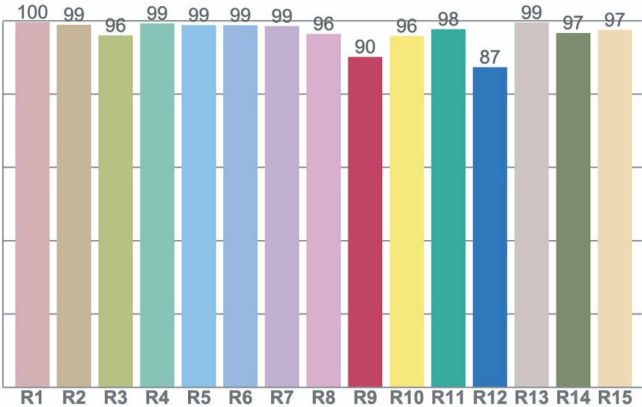
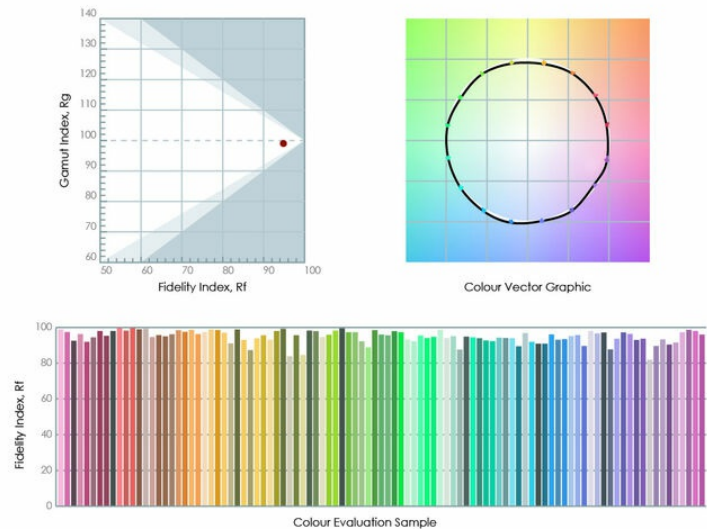


|                |                                      |
|----------------|--------------------------------------|
| TM66           | 2.3 (LIA Assured Verification Score) |
| INGRESS RATING | IP20                                 |
| IMPACT RATING  | IK03                                 |
| COMPLIANCE     | IEC 60598-1:2020                     |
|                | IEC 60598-2-1:2020                   |

|                                |                |
|--------------------------------|----------------|
| COLOUR TEMPERATURE             | 2700K          |
| CIE CRI AVAILABLE AS           | >95 Ra         |
| IES TM-30 COLOUR FIDELITY (Rf) | >95            |
| IES TM-30 COLOUR GAMUT (Rg)    | ≈100           |
| BINNING                        | 2-step         |
| LIFETIME L70/B10 (HOURS)       | >50000         |
| AMBIENT TEMPERATURE (Ta)       | -20 ... +25 °C |

| ELECTRICAL       |                              |
|------------------|------------------------------|
| SOURCE TYPE      | LED                          |
| PRODUCT CLASS    | Class III (SELV low voltage) |
| DIMMING PROTOCOL | DALI dimmable                |

| OTHER DATA     |               |
|----------------|---------------|
| CABLE TYPE     | FEP (200 °C)  |
| CABLE SIZE     | N/A           |
| CABLE LENGTH   | N/A           |
| CONNECTOR TYPE | Track Adapter |
| WEIGHT         | 250           |
| FIRE RATED     | N/A           |



WWW.JOHN CULLENLIGHTING.COM

UK +44 (0) 20 7371 9000 | Middle East & APAC +971 (0) 4 321 114 | Europe +33 (0)9 61 68 22 81

