

VORSA PORT 50 WIDE BLACK 2024

SLVP5W025

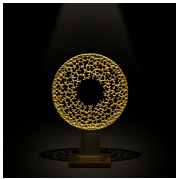
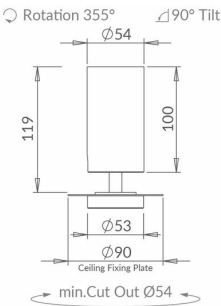
LUMINAIRE REF:

PROJECT REF:



BLACK RAL 9005

The new Vorsa Port 50 spotlight has been re-imagined as a simplified plaster-in spotlight. It has been re-engineered for 2024 with a cleaner aesthetic, an increased light output and an industry-leading light output at 98 CRI. Interchangeable optics allow for a range of beam distributions, all easy to fit on-site. We have introduced a new innovative screwless self-supporting tilt mechanism. It comes complete with recyclable cardboard protection shield for first fix installation. The range has been built to the principles of the circular economy to not only maximise resources but also to reduce waste and environmental impact.



WIDE

ACCESSORIES

- 

VORSA 50
HONEYCOMB
INSERT Ø48MM X
3MM
ACHCVO502
- 

VORSA 50 SAND
BLASTED GLASS
INSERT Ø48MM X
3MM
ACSGVO502
- 

VORSA 50 HIGH
TRANSMISSION
SOFTENING GLASS
INSERT Ø48MM X
3MM
ACSLVO502
- 

VORSA PORT
PLASTER IN
FRAME WHITE RAL
9003
SLVPXX015-Frame
- 

VORSA PORT
PLASTER IN
FRAME BLACK RAL
9003
SLVPXX025-Frame



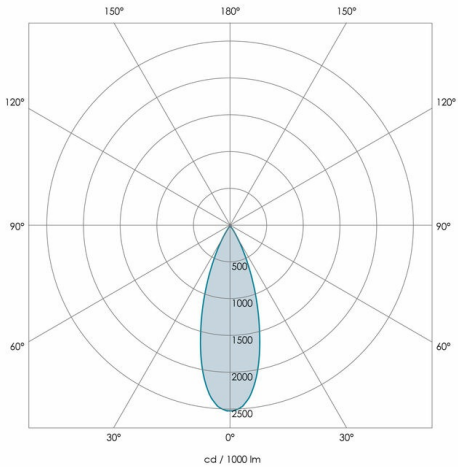
VORSA PORT 50 WIDE BLACK 2024

SLVP5W025

LUMINAIRE REF:

PROJECT REF:

| SPECIFICATION | WIDE |
|---------------------------|------|
| BEAM ANGLE (°) | 36° |
| LED SOURCE LUMENS (LM) | 1290 |
| LUMINAIRE LUMENS (LM) | 850 |
| INTENSITY RATING (CD) | 2130 |
| POWER CONSUMPTION (W) | 12 |
| LUMINAIRE EFFICACY (LM/W) | 71 |
| DRIVE CURRENT (mA) | 350 |
| FORWARD VOLTAGE (V DC) | 37 |
| | |
| | |
| | |



| | |
|----------------|--------------------------------------|
| TM66 | 2.3 (LIA Assured Verification Score) |
| INGRESS RATING | IP20 |
| IMPACT RATING | IK03 |
| COMPLIANCE | IEC/EN 60598-1:2021 |
| | IEC 60598-2-2:2011 |

| | |
|--------------------------------|----------------|
| COLOUR TEMPERATURE | 2700K |
| CIE CRI AVAILABLE AS | >95 Ra |
| IES TM-30 COLOUR FIDELITY (Rf) | >95 |
| IES TM-30 COLOUR GAMUT (Rg) | ≈100 |
| BINNING | 2-step |
| LIFETIME L70/B10 (HOURS) | >50000 |
| AMBIENT TEMPERATURE (Ta) | -20 ... +25 °C |

| ELECTRICAL | |
|------------------|------------------------------------|
| SOURCE TYPE | LED |
| PRODUCT CLASS | Class III (SELV low voltage) |
| DIMMING PROTOCOL | 0-10V dimmable |
| | DALI dimmable |
| | Mains dimmable (phase cut dimming) |
| | Switched |

| OTHER DATA | |
|----------------|-------------------------------|
| CABLE TYPE | FEP (200 °C) |
| CABLE SIZE | 2 off 22AWG 19/0.15 (0.15mm2) |
| CABLE LENGTH | 150 |
| CONNECTOR TYPE | Leads included |
| WEIGHT | 440 |
| FIRE RATED | N/A |

