

VORSA PORT 50 WIDE WHITE 2024
SLVP5W015

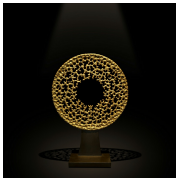
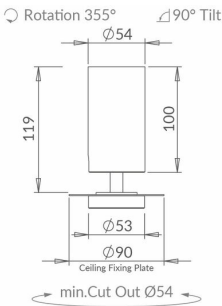
LUMINAIRE REF:

PROJECT REF:



WHITE RAL 9003

The new Vorsa Port 50 spotlight has been re-imagined as a simplified plaster-in spotlight. It has been re-engineered for 2024 with a cleaner aesthetic, an increased light output and an industry-leading light output at 98 CRI. Interchangeable optics allow for a range of beam distributions, all easy to fit on-site. We have introduced a new innovative screwless self-supporting tilt mechanism. It comes complete with recyclable cardboard protection shield for first fix installation. The range has been built to the principles of the circular economy to not only maximise resources but also to reduce waste and environmental impact.



WIDE

ACCESSORIES



VORSA 50
HONEYCOMB
INSERT Ø48MM X
3MM
ACHCVO502



VORSA 50 SAND
BLASTED GLASS
INSERT Ø48MM X
3MM
ACSGVO502



VORSA 50 HIGH
TRANSMISSION
SOFTENING GLASS
INSERT Ø48MM X
3MM
ACSLVO502



VORSA PORT
PLASTER IN
FRAME WHITE RAL
9003
SLVPXX015-Frame



VORSA PORT
PLASTER IN
FRAME BLACK RAL
9003
SLVPXX025-Frame



WWW.JOHN CULLEN LIGHTING.COM

UK +44 (0) 20 7371 9000 | Middle East & APAC +971 (0) 4 321 114 | Europe +33 (0)9 61 68 22 81

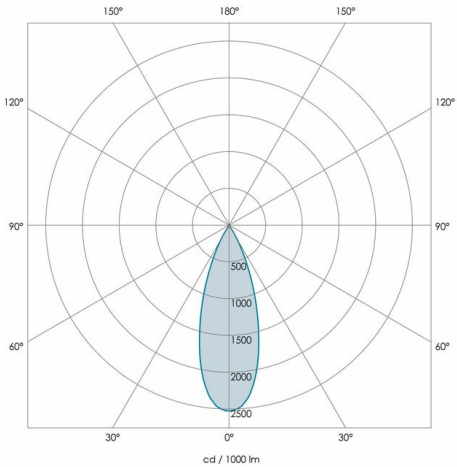


VORSA PORT 50 WIDE WHITE 2024
SLVP5W015

LUMINAIRE REF:

PROJECT REF:

SPECIFICATION	WIDE
BEAM ANGLE (°)	36°
LED SOURCE LUMENS (LM)	1290
LUMINAIRE LUMENS (LM)	850
INTENSITY RATING (CD)	2130
POWER CONSUMPTION (W)	12
LUMINAIRE EFFICACY (LM/W)	71
DRIVE CURRENT (mA)	350
FORWARD VOLTAGE (V DC)	37



TM66	2.3 (LIA Assured Verification Score)
INGRESS RATING	IP20
IMPACT RATING	IK03
COMPLIANCE	IEC/EN 60598-1:2021
	IEC 60598-2-2:2011

COLOUR TEMPERATURE	2700K
CIE CRI AVAILABLE AS	>95 Ra
IES TM-30 COLOUR FIDELITY (Rf)	>95
IES TM-30 COLOUR GAMUT (Rg)	≈100
BINNING	2-step
LIFETIME L70/B10 (HOURS)	>50000
AMBIENT TEMPERATURE (Ta)	-20 ... +25 °C

ELECTRICAL	
SOURCE TYPE	LED
PRODUCT CLASS	Class III (SELV low voltage)
DIMMING PROTOCOL	0-10V dimmable
	DALI dimmable
	Mains dimmable (phase cut dimming)
	Switched

OTHER DATA	
CABLE TYPE	FEP (200 °C)
CABLE SIZE	2 off 22AWG 19/0.15 (0.15mm ²)
CABLE LENGTH	150
CONNECTOR TYPE	Leads included
WEIGHT	440
FIRE RATED	N/A

