

VORSA PORT 40 WIDE BLACK 2024  
SLVP4W025

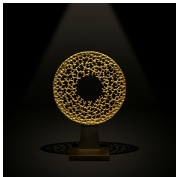
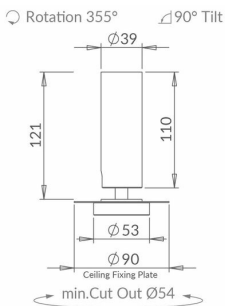
LUMINAIRE REF:

PROJECT REF:



BLACK RAL 9005

The new Vorsa Port 40 spotlight has been re-imagined as a simplified mini plaster-in spotlight. It has been re-engineered for 2024 with a cleaner aesthetic, an increased light output and an industry-leading light output at 98 CRI. Interchangeable optics allow for a range of beam distributions, all easy to fit on-site. We have introduced a new innovative screwless self-supporting tilt mechanism. It comes complete with recyclable cardboard protection shield for first fix installation. The range has been built to the principles of the circular economy to not only maximise resources but also to reduce waste and environmental impact.



WIDE

ACCESSORIES



VORSA 40  
HONEYCOMB  
INSERT Ø33MM X  
3MM  
ACHCVO402



VORSA 40 SAND  
BLASTED GLASS  
INSERT Ø33MM X  
3MM  
ACSGVO402



VORSA 40 HIGH  
TRANSMISSION  
SOFTENING GLASS  
INSERT Ø33MM X  
3MM  
ACSLVO402



VORSA PORT  
PLASTER IN  
FRAME WHITE RAL  
9003  
SLVPXX015-Frame



VORSA PORT  
PLASTER IN  
FRAME BLACK RAL  
9003  
SLVPXX025-Frame

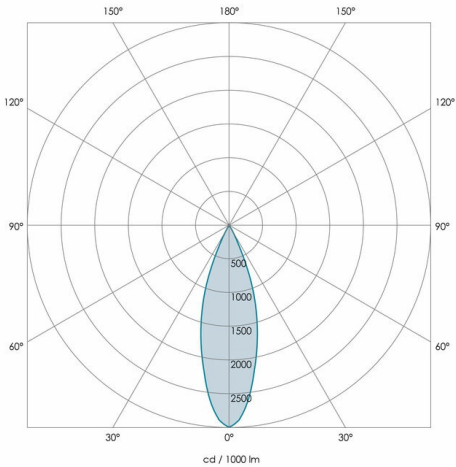


VORSA PORT 40 WIDE BLACK 2024  
SLVP4W025

LUMINAIRE REF:

PROJECT REF:

SPECIFICATION	WIDE
BEAM ANGLE (°)	33°
LED SOURCE LUMENS (LM)	680
LUMINAIRE LUMENS (LM)	480
INTENSITY RATING (CD)	1430
POWER CONSUMPTION (W)	9
LUMINAIRE EFFICACY (LM/W)	53
DRIVE CURRENT (mA)	500
FORWARD VOLTAGE (V DC)	18.5



TM66	2.3 (LIA Assured Verification Score)
INGRESS RATING	IP20
IMPACT RATING	IK03
COMPLIANCE	IEC/EN 60598-1:2021
	IEC 60598-2-2:2011

COLOUR TEMPERATURE	2700K
CIE CRI AVAILABLE AS	>95 Ra
IES TM-30 COLOUR FIDELITY (Rf)	>95
IES TM-30 COLOUR GAMUT (Rg)	≈100
BINNING	2-step
LIFETIME L70/B10 (HOURS)	>50000
AMBIENT TEMPERATURE (Ta)	-20 ... +25 °C

ELECTRICAL	
SOURCE TYPE	LED
PRODUCT CLASS	Class III (SELV low voltage)
DIMMING PROTOCOL	0-10V dimmable
	DALI dimmable
	Mains dimmable (phase cut dimming)
	Switched

OTHER DATA	
Cable Type	FEP (200 °C)
Cable Size	2 off 22AWG 19/0.15 (0.15mm2)
Cable Length	150
Connector Type	Leads included
Weight	320
Fire rated	N/A

