

VORSA FIX 40 WIDE WHITE 2024
SLVF4W015

LUMINAIRE REF:

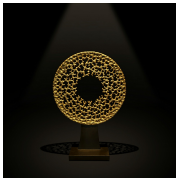
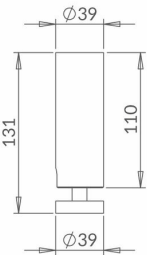
PROJECT REF:



WHITE RAL 9003

The new Vorsa Fix 40 spotlight is a mini surface-mounted directional spotlight. It has been re-engineered for 2024 with a cleaner aesthetic, an increased light output and an industry-leading light output at 98 CRI. Interchangeable optics allow for a range of beam distributions, all easy to fit on-site. We have introduced a new innovative screwless self-supporting tilt mechanism. It is perfect for use on beams and concrete ceilings where recessed fittings are unsuitable. This small spotlight is discreet and easy to direct the light where required. The fitting has a deep baffle which ensures that glare is minimised. The range has been built to the principles of the circular economy to not only maximise resources but also to reduce waste and environmental impact.

Rotation 355° 90° Tilt



WIDE

ACCESSORIES



VORSA 40
HONEYCOMB
INSERT Ø33MM X
3MM
ACHCVO402



VORSA 40 SAND
BLASTED GLASS
INSERT Ø33MM X
3MM
ACSGVO402



VORSA 40 HIGH
TRANSMISSION
SOFTENING GLASS
INSERT Ø33MM X
3MM
ACSLVO402



WWW.JOHN CULLEN LIGHTING.COM

UK +44 (0) 20 7371 9000 | Middle East & APAC +971 (0) 4 321 114 | Europe +33 (0)9 61 68 22 81

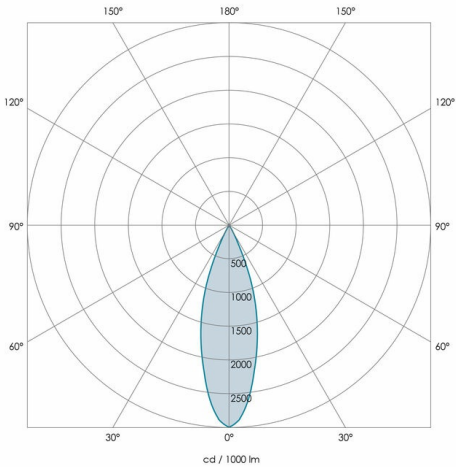


VORSA FIX 40 WIDE WHITE 2024
SLVF4W015

LUMINAIRE REF:

PROJECT REF:

SPECIFICATION	WIDE
BEAM ANGLE (°)	33°
LED SOURCE LUMENS (LM)	680
LUMINAIRE LUMENS (LM)	480
INTENSITY RATING (CD)	1430
POWER CONSUMPTION (W)	9
LUMINAIRE EFFICACY (LM/W)	53
DRIVE CURRENT (mA)	500
FORWARD VOLTAGE (V DC)	18.5

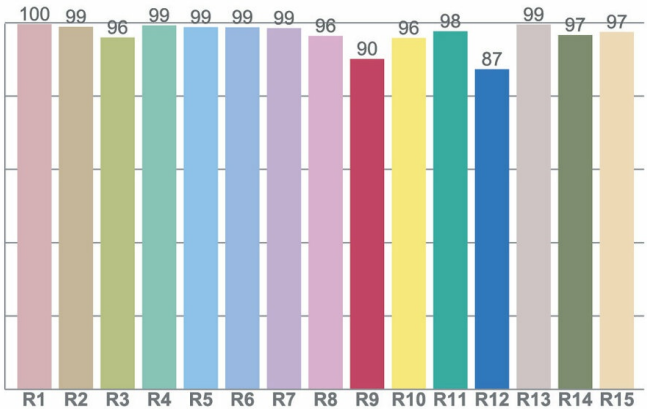
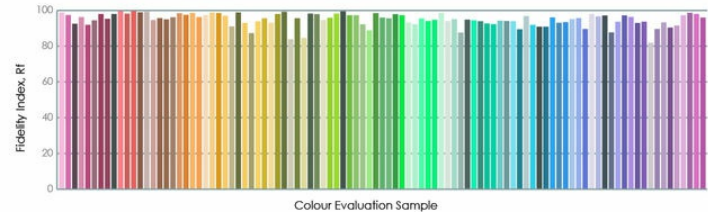
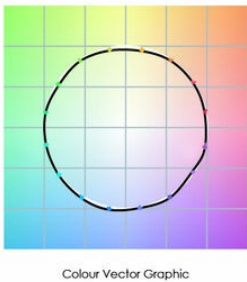
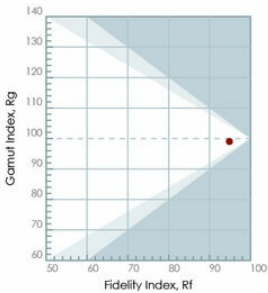


TM66	2.3 (LIA Assured Verification Score)
INGRESS RATING	IP20
IMPACT RATING	IK03
COMPLIANCE	IEC 60598-1:2020
	IEC 60598-2-1:2020

COLOUR TEMPERATURE	2700K
CIE CRI AVAILABLE AS	>95 Ra
IES TM-30 COLOUR FIDELITY (Rf)	>95
IES TM-30 COLOUR GAMUT (Rg)	≈100
BINNING	2-step
LIFETIME L70/B10 (HOURS)	>50000
AMBIENT TEMPERATURE (Ta)	-20 ... +25 °C

ELECTRICAL	
SOURCE TYPE	LED
PRODUCT CLASS	Class III (SELV low voltage)
DIMMING PROTOCOL	0-10V dimmable
	DALI dimmable
	Mains dimmable (phase cut dimming)
	Switched

OTHER DATA	
CABLE TYPE	FEP (200 °C)
CABLE SIZE	2 off 22AWG 19/0.15 (0.15mm2)
CABLE LENGTH	150
CONNECTOR TYPE	Leads included
WEIGHT	250
FIRE RATED	N/A



WWW.JOHN CULLENLIGHTING.COM

UK +44 (0) 20 7371 9000 | Middle East & APAC +971 (0) 4 321 114 | Europe +33 (0)9 61 68 22 81

