

VORSA TRACK 50 2024
TRACK MOUNTED DIRECTIONAL SPOTLIGHT

LUMINAIRE REF:

PROJECT REF:



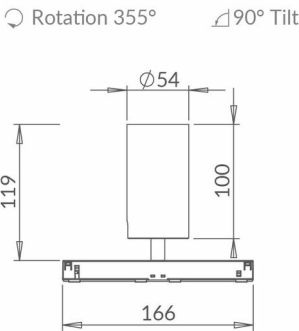
The updated Vorsa Track 50 is a versatile "click and fit" track-mounted directional spotlight. It has been re-engineered for 2024 with a cleaner aesthetic, an increased light output and an industry-leading light output at 98 CRI. Interchangeable optics allow for a range of beam distributions, all easy to fit on-site. Its track architecture facilitates easy changing between different size Vorsa heads when commissioning a scheme. We have introduced a new innovative screwless self-supporting tilt mechanism. This fitting is ideal for use in areas of key areas of the home and is perfect for use on beams and concrete ceilings where recessed fittings are unsuitable. The Vorsa Track 50 can be used on a range of Stucchi track systems including recessed, surface mounted and suspended. Please ask for full details. The range has been built to the principles of the circular economy to not only maximise resources but also to reduce waste and environmental impact.



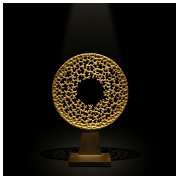
WHITE RAL 9003



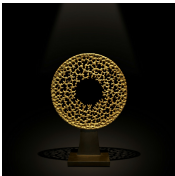
BLACK RAL 9005



SUPER SPOT



SPOT



NARROW

ACCESSORIES



VORSA 50
HONEYCOMB
INSERT Ø48MM X
3MM
ACHCVO502



VORSA 50 SAND
BLASTED GLASS
INSERT Ø48MM X
3MM
ACSGVO502



VORSA 50 HIGH
TRANSMISSION
SOFTENING GLASS
INSERT Ø48MM X
3MM
ACSLVO502



VORSA STANDARD
EVO TRACK
WHITE - 1M/2M
SLVTF1012/2012



VORSA STANDARD
EVO TRACK BLACK
- 1M/2M
SLVTF1022/2022



VORSA RECESSED
EVO TRACK BLACK
- 1M/2M
SLVTR1022/2022



VORSA
SUSPENDED
TRACK WHITE -
1M/2M
SLVTW1012/2012



VORSA
SUSPENDED
TRACK BLACK -
1M/2M
SLVTW1022/2022



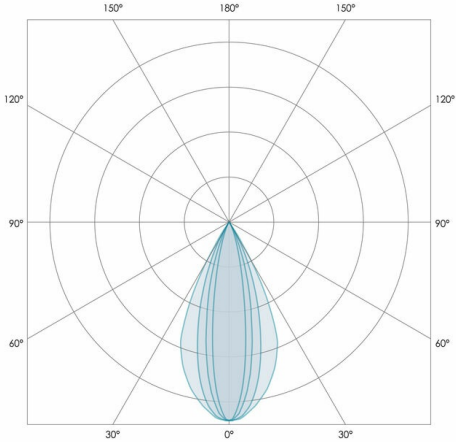
VORSA TRACK 50 2024

TRACK MOUNTED DIRECTIONAL SPOTLIGHT

LUMINAIRE REF:

PROJECT REF:

| SPECIFICATION | SUPER SPOT | SPOT | NARROW | MEDIUM | WIDE | SUPER WIDE |
|---------------------------|------------|------|--------|--------|------|------------|
| BEAM ANGLE (°) | 11° | 12° | 19° | 26° | 36° | 50° |
| LED SOURCE LUMENS (LM) | 486 | 1182 | 1290 | 1290 | 1290 | 1290 |
| LUMINAIRE LUMENS (LM) | 410 | 660 | 990 | 920 | 850 | 780 |
| INTENSITY RATING (CD) | 6440 | 8390 | 6330 | 3645 | 2130 | 1310 |
| POWER CONSUMPTION (W) | 6 | 12 | 12 | 12 | 12 | 12 |
| LUMINAIRE EFFICACY (LM/W) | 68 | 52 | 83 | 77 | 71 | 65 |
| DRIVE CURRENT (mA) | N/A | N/A | N/A | N/A | N/A | N/A |
| FORWARD VOLTAGE (V DC) | N/A | N/A | N/A | N/A | N/A | N/A |
| | | | | | | |
| | | | | | | |
| | | | | | | |



| | |
|----------------|--------------------------------------|
| TM66 | 2.3 (LIA Assured Verification Score) |
| INGRESS RATING | IP20 |
| IMPACT RATING | IK03 |
| COMPLIANCE | IEC 60598-1:2020 |
| | IEC 60598-2-1:2020 |
| | |

| | |
|--------------------------------|----------------|
| COLOUR TEMPERATURE | 2700K |
| CIE CRI AVAILABLE AS | >95 Ra |
| IES TM-30 COLOUR FIDELITY (Rf) | >95 |
| IES TM-30 COLOUR GAMUT (Rg) | ≈100 |
| BINNING | 2-step |
| LIFETIME L70/B10 (HOURS) | >50000 |
| AMBIENT TEMPERATURE (Ta) | -20 ... +25 °C |

| | |
|------------------|------------------------------|
| ELECTRICAL | |
| SOURCE TYPE | LED |
| PRODUCT CLASS | Class III (SELV low voltage) |
| DIMMING PROTOCOL | 0-10V dimmable |
| | DALI dimmable |
| | Switched |

| | |
|----------------|---------------|
| OTHER DATA | |
| CABLE TYPE | FEP (200 °C) |
| CABLE SIZE | N/A |
| CABLE LENGTH | N/A |
| CONNECTOR TYPE | Track Adapter |
| WEIGHT | 375 |
| FIRE RATED | N/A |

