

VORSA PORT 50 2024
INTERCHANGEABLE DIRECTIONAL SPOTLIGHT

LUMINAIRE REF:

PROJECT REF:



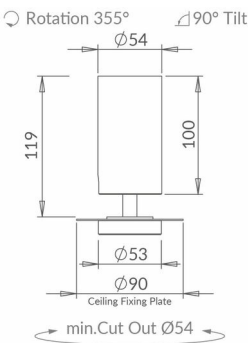
The new Vorsa Port 50 spotlight has been re-imagined as a simplified plaster-in spotlight. It has been re-engineered for 2024 with a cleaner aesthetic, an increased light output and an industry-leading light output at 98 CRI. Interchangeable optics allow for a range of beam distributions, all easy to fit on-site. We have introduced a new innovative screwless self-supporting tilt mechanism. It comes complete with recyclable cardboard protection shield for first fix installation. The range has been built to the principles of the circular economy to not only maximise resources but also to reduce waste and environmental impact.



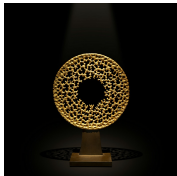
WHITE RAL 9003



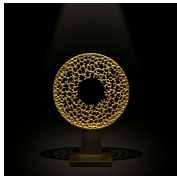
BLACK RAL 9005



SUPER SPOT



SPOT



NARROW

ACCESSORIES



VORSA 50
HONEYCOMB
INSERT Ø48MM X
3MM
ACHCVO502



VORSA 50 SAND
BLASTED GLASS
INSERT Ø48MM X
3MM
ACSGVO502



VORSA 50 HIGH
TRANSMISSION
SOFTENING GLASS
INSERT Ø48MM X
3MM
ACSLVO502



VORSA PORT
PLASTER IN
FRAME WHITE RAL
9003
SLVPXX015-Frame



VORSA PORT
PLASTER IN
FRAME BLACK RAL
9003
SLVPXX025-Frame

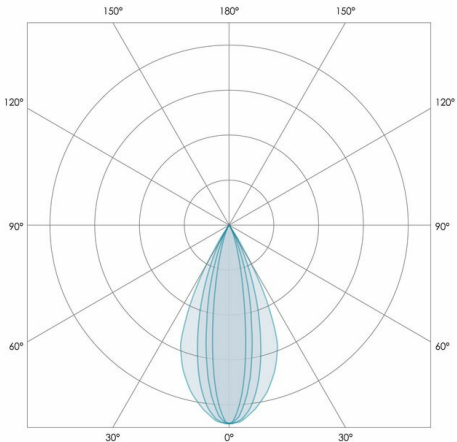


VORSA PORT 50 2024
INTERCHANGEABLE DIRECTIONAL SPOTLIGHT

LUMINAIRE REF:

PROJECT REF:

SPECIFICATION	SUPER SPOT	SPOT	NARROW	MEDIUM	WIDE	SUPER WIDE
BEAM ANGLE (°)	11°	12°	19°	26°	36°	50°
LED SOURCE LUMENS (LM)	486	1182	1290	1290	1290	1290
LUMINAIRE LUMENS (LM)	410	660	990	920	850	780
INTENSITY RATING (CD)	6440	8390	6330	3645	2130	1310
POWER CONSUMPTION (W)	6	13	12	12	12	12
LUMINAIRE EFFICACY (LM/W)	68	52	83	77	71	65
DRIVE CURRENT (mA)	350	350	350	350	350	350
FORWARD VOLTAGE (V DC)	18.5	37	37	37	37	37



TM66	2.3 (LIA Assured Verification Score)
INGRESS RATING	IP20
IMPACT RATING	IK03
COMPLIANCE	IEC/EN 60598-1:2021
	IEC 60598-2-2:2011

COLOUR TEMPERATURE	2700K
CIE CRI AVAILABLE AS	>95 Ra
IES TM-30 COLOUR FIDELITY (Rf)	>95
IES TM-30 COLOUR GAMUT (Rg)	≈100
BINNING	2-step
LIFETIME L70/B10 (HOURS)	>50000
AMBIENT TEMPERATURE (Ta)	-20 ... +25 °C

ELECTRICAL	
SOURCE TYPE	LED
PRODUCT CLASS	Class III (SELV low voltage)
DIMMING PROTOCOL	DALI dimmable
	Mains dimmable (phase cut dimming)
	Switched
	0-10V dimmable

OTHER DATA	
CABLE TYPE	FEP (200 °C)
CABLE SIZE	2 off 22AWG 19/0.15 (0.15mm2)
CABLE LENGTH	150
CONNECTOR TYPE	Leads included
WEIGHT	440
FIRE RATED	N/A

