

VORSA PORT 40 2024
INTERCHANGEABLE DIRECTIONAL MINI SPOTLIGHT

LUMINAIRE REF:

PROJECT REF:



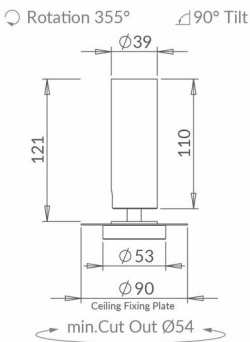
The new Vorsa Port 40 spotlight has been re-imagined as a simplified mini plaster-in spotlight. It has been re-engineered for 2024 with a cleaner aesthetic, an increased light output and an industry-leading light output at 98 CRI. Interchangeable optics allow for a range of beam distributions, all easy to fit on-site. We have introduced a new innovative screwless self-supporting tilt mechanism. It comes complete with recyclable cardboard protection shield for first fix installation. The range has been built to the principles of the circular economy to not only maximise resources but also to reduce waste and environmental impact.



WHITE RAL 9003



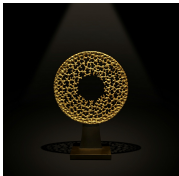
BLACK RAL 9005



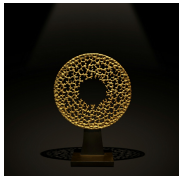
SPOT



NARROW



MEDIUM



WIDE

ACCESSORIES



VORSA 40
HONEYCOMB
INSERT Ø33MM X
3MM
ACHCVO402



VORSA 40 SAND
BLASTED GLASS
INSERT Ø33MM X
3MM
ACSGVO402



VORSA 40 HIGH
TRANSMISSION
SOFTENING GLASS
INSERT Ø33MM X
3MM
ACSLVO402



VORSA PORT
PLASTER IN
FRAME WHITE RAL
9003
SLVPXX015-Frame



VORSA PORT
PLASTER IN
FRAME BLACK RAL
9003
SLVPXX025-Frame

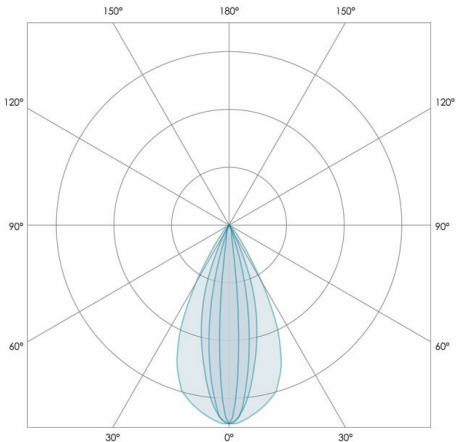


VORSA PORT 40 2024
INTERCHANGEABLE DIRECTIONAL MINI SPOTLIGHT

LUMINAIRE REF:

PROJECT REF:

SPECIFICATION	SPOT	NARROW	MEDIUM	WIDE	SUPER WIDE
BEAM ANGLE (°)	9°	11°	23°	33°	53°
LED SOURCE LUMENS (LM)	486	680	680	680	680
LUMINAIRE LUMENS (LM)	225	370	440	480	470
INTENSITY RATING (CD)	3990	4800	4265	1430	650
POWER CONSUMPTION (W)	6	9	9	9	9
LUMINAIRE EFFICACY (LM/W)	38	41	49	53	52
DRIVE CURRENT (mA)	350	500	500	500	500
FORWARD VOLTAGE (V DC)	18.5	18.5	18.5	N/A	18.5



TM66	2.3 (LIA Assured Verification Score)
INGRESS RATING	IP20
IMPACT RATING	IK03
COMPLIANCE	IEC/EN 60598-1:2021
	IEC 60598-2-2:2011

COLOUR TEMPERATURE	2700K
CIE CRI AVAILABLE AS	>95 Ra
IES TM-30 COLOUR FIDELITY (Rf)	>95
IES TM-30 COLOUR GAMUT (Rg)	≈100
BINNING	2-step
LIFETIME L70/B10 (HOURS)	>50000
AMBIENT TEMPERATURE (Ta)	-20 ... +25 °C

ELECTRICAL	
SOURCE TYPE	LED
PRODUCT CLASS	Class III (SELV low voltage)
DIMMING PROTOCOL	DALI dimmable
	Mains dimmable (phase cut dimming)
	Switched
	0-10V dimmable

OTHER DATA	
Cable Type	FEP (200 °C)
Cable Size	2 off 22AWG 19/0.15 (0.15mm2)
Cable Length	150
Connector Type	Leads included
Weight	320
Fire rated	N/A

