

VORSA FIX 50 2024
FIXED MOUNTED DIRECTIONAL SPOTLIGHT

LUMINAIRE REF:

PROJECT REF:



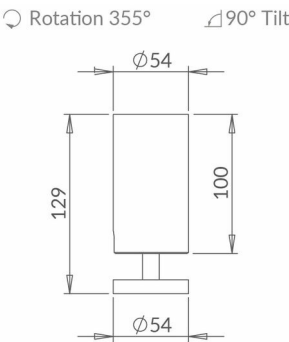
The new Vorsa Fix 50 spotlight is a surface-mounted directional spotlight. It has been re-engineered for 2024 with a cleaner aesthetic, an increased light output and an industry-leading light output at 98 CRI. Interchangeable optics allow for a range of beam distributions, all easy to fit on-site. We have introduced a new innovative screwless self-supporting tilt mechanism. It is perfect for use on beams and concrete ceilings where recessed fittings are unsuitable. This small spotlight is discreet and easy to direct the light where required. The fitting has a deep baffle which ensures that glare is minimised. The range has been built to the principles of the circular economy to not only maximise resources but also to reduce waste and environmental impact.



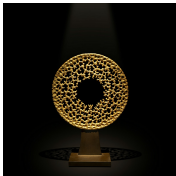
WHITE RAL 9003



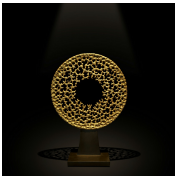
BLACK RAL 9005



SUPER SPOT



SPOT



NARROW

ACCESSORIES



VORSA 50
HONEYCOMB
INSERT Ø48MM X
3MM
ACHCVO502



VORSA 50 SAND
BLASTED GLASS
INSERT Ø48MM X
3MM
ACSGVO502



VORSA 50 HIGH
TRANSMISSION
SOFTENING GLASS
INSERT Ø48MM X
3MM
ACSLVO502



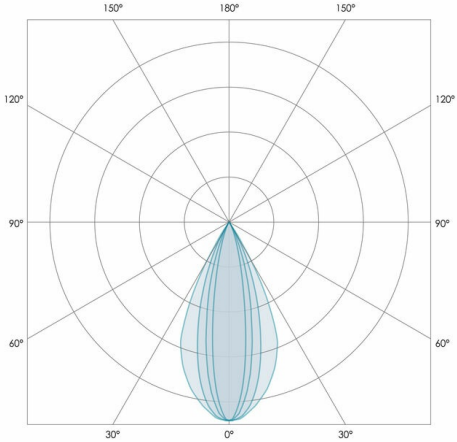
VORSA FIX 50 2024

FIXED MOUNTED DIRECTIONAL SPOTLIGHT

LUMINAIRE REF:

PROJECT REF:

SPECIFICATION	SUPER SPOT	SPOT	NARROW	MEDIUM	WIDE	SUPER WIDE
BEAM ANGLE (°)	11°	12°	19°	26°	36°	50°
LED SOURCE LUMENS (LM)	486	1182	1290	1290	1290	1290
LUMINAIRE LUMENS (LM)	410	660	990	920	850	780
INTENSITY RATING (CD)	6440	8390	6330	3645	2130	1310
POWER CONSUMPTION (W)	6	13	12	12	12	12
LUMINAIRE EFFICACY (LM/W)	68	52	83	77	71	65
DRIVE CURRENT (mA)	350	350	350	350	350	350
FORWARD VOLTAGE (V DC)	18.5	37	37	37	37	37



TM66	2.3 (LIA Assured Verification Score)
INGRESS RATING	IP20
IMPACT RATING	IK03
COMPLIANCE	IEC 60598-1:2020
	IEC 60598-2-1:2020

COLOUR TEMPERATURE	2700K
CIE CRI AVAILABLE AS	>95 Ra
IES TM-30 COLOUR FIDELITY (Rf)	>95
IES TM-30 COLOUR GAMUT (Rg)	≈100
BINNING	2-step
LIFETIME L70/B10 (HOURS)	>50000
AMBIENT TEMPERATURE (Ta)	-20 ... +25 °C

ELECTRICAL	
SOURCE TYPE	LED
PRODUCT CLASS	Class III (SELV low voltage)
DIMMING PROTOCOL	0-10V dimmable
	DALI dimmable
	Mains dimmable (phase cut dimming)
	Switched

OTHER DATA	
CABLE TYPE	FEP (200 °C)
CABLE SIZE	2 off 22AWG 19/0.15 (0.15mm2)
CABLE LENGTH	150
CONNECTOR TYPE	Leads included
WEIGHT	380
FIRE RATED	N/A

