

CONTOUR HD ULTRA-SLIM LED STRIP 2700K
IP67

LICN182MP271MIP67P

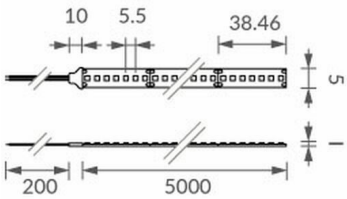
LUMINAIRE REF:

PROJECT REF:



N/A

This specialist Contour HD strip is both ultra-narrow high-density so ideal for ideal for use in joinery. It is a fantastic way of adding depth, variety and interest to your scheme. A range of profiles enables the strip to be precisely integrated and also help avoid a "dotty" effect.



ACCESSORIES



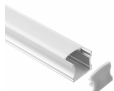
CONTOUR
CURVED CORNER
ALUMINIUM
PROFILE 2024 1M
LICNAP10021M



CONTOUR
CURVED CORNER
ALUMINIUM
PROFILE 2024 2M
LICNAP10022M



CONTOUR
STANDARD
ALUMINIUM
PROFILE 2024 1M
LICNAP12021M



CONTOUR
STANDARD
ALUMINIUM
PROFILE 2024 2M
LICNAP12022M



CONTOUR MICRO
PROFILE 2024 1M
LICNAPCD10101M



CONTOUR MICRO
PROFILE 2024 2M
LICNAPCD10102M



WWW.JOHN CULLEN LIGHTING.COM

UK +44 (0) 20 7371 9000 | Middle East & APAC +971 (0) 4 321 114 | Europe +33 (0)9 61 68 22 81



CONTOUR HD ULTRA-SLIM LED STRIP 2700K
IP67
LICN182MP271MIP67P

LUMINAIRE REF:

PROJECT REF:

SPECIFICATION	LAMBERTIAN
BEAM ANGLE (°)	120°
LED SOURCE LUMENS (LM)	860lm
LUMINAIRE LUMENS (LM)	860lm/M
INTENSITY RATING (CD)	N/A
POWER CONSUMPTION (W)	9.6W
LUMINAIRE EFFICACY (LM/W)	89.58lm/w
DRIVE CURRENT (mA)	400
FORWARD VOLTAGE (V DC)	24V

INGRESS RATING	IP67
IMPACT RATING	N/A
COMPLIANCE	CE
	UL

COLOUR TEMPERATURE	2700K
CIE CRI AVAILABLE AS	>95
IES TM-30 COLOUR FIDELITY (Rf)	N/A
IES TM-30 COLOUR GAMUT (Rg)	N/A
BINNING	2 step
LIFETIME L70/B10 (HOURS)	60000
AMBIENT TEMPERATURE (Ta)	-20~45°C

ELECTRICAL	
SOURCE TYPE	LED
PRODUCT CLASS	Class III (SELV low voltage)
DIMMING PROTOCOL	DALI dimmable
	1-10V dimmable
	Switched

OTHER DATA	
CABLE TYPE	UL1007
CABLE SIZE	22AWG
CABLE LENGTH	0.3mtr
CONNECTOR TYPE	N/A
WEIGHT	0.45kg
FIRE RATED	N/A

