

CONTOUR HD HIGH LUMEN LED STRIP IP20
11.5W/16W IP20 HD 2700/2400K STRIP

LUMINAIRE REF:

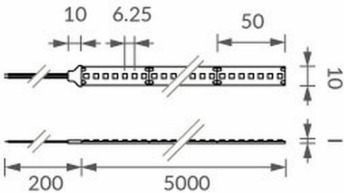
PROJECT REF:



This specialist Contour HD strip is ideal for when you are looking for a higher lumen output where more punch is required. It can highlight features such as joinery, stair treads, coving or under cabinets to create floating effects for larger scale projects where you require a line of light rather than a point source.



N/A



ACCESSORIES



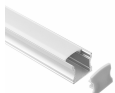
CONTOUR
CURVED CORNER
ALUMINIUM
PROFILE 2024 1M
LICNAP10021M



CONTOUR
CURVED CORNER
ALUMINIUM
PROFILE 2024 2M
LICNAP10022M



CONTOUR
STANDARD
ALUMINIUM
PROFILE 2024 1M
LICNAP12021M



CONTOUR
STANDARD
ALUMINIUM
PROFILE 2024 2M
LICNAP12022M



CONTOUR HD HIGH LUMEN LED STRIP IP20
11.5W/16W IP20 HD 2700/2400K STRIP

LUMINAIRE REF:

PROJECT REF:

SPECIFICATION	LAMBERTIAN
BEAM ANGLE (°)	120°
LED SOURCE LUMENS (LM)	1290lm
LUMINAIRE LUMENS (LM)	1290lm/M
INTENSITY RATING (CD)	N/A
POWER CONSUMPTION (W)	11.5W
LUMINAIRE EFFICACY (LM/W)	112.17lm/w
DRIVE CURRENT (mA)	479
FORWARD VOLTAGE (V DC)	24V

INGRESS RATING	IP20
IMPACT RATING	N/A
COMPLIANCE	CE
	UL

COLOUR TEMPERATURE	2700K
CIE CRI AVAILABLE AS	>95
IES TM-30 COLOUR FIDELITY (Rf)	N/A
IES TM-30 COLOUR GAMUT (Rg)	N/A
BINNING	2 step
LIFETIME L70/B10 (HOURS)	60000
AMBIENT TEMPERATURE (Ta)	-20~45°C

ELECTRICAL	
SOURCE TYPE	LED
PRODUCT CLASS	Class III (SELV low voltage)
DIMMING PROTOCOL	1-10V dimmable
	DALI dimmable
	Mains dimmable (phase cut dimming)
	Switched

OTHER DATA	
CABLE TYPE	UL1007
CABLE SIZE	22AWG
CABLE LENGTH	0.3mtr
CONNECTOR TYPE	N/A
WEIGHT	0.15KG
FIRE RATED	N/A

