

POLESPRING PURE 50 IP65 WHITE MEDIUM

KPS50BPU27ME01

LUMINAIRE REF:

PROJECT REF:

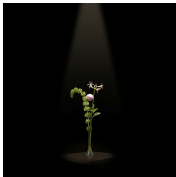
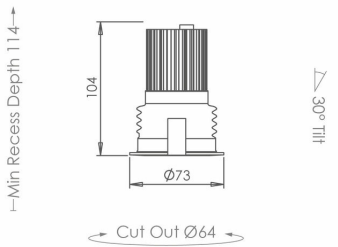


WHITE RAL 9003 TEXTURED

WHITE MEDIUM DIRECTIONAL 2700K HIGH LUMEN OUTPUT DOWNLIGHT


Our flagship Polespring 50 is now IP65 with an accessory hood so ideal for wet areas. An increased aperture delivers market-leading performance. To minimise glare, the fitting comes with the 30° tilt and extra deep 25mm black baffle. New "clip-fit" mechanics create a modular design to create a more sustainable product. The standard white finish is now a textured matt RAL9003. The Polespring 50 uses the Pure 50 engine as standard. It is also available with the AmbiDim 50 and Tune 50.


This product replaces the Waterspring 50 and Aquabeam 50 as it comes as IP65 from the front face as standard. NB: The cut-out of this product has increased to 64MM.





MEDIUM

ACCESSORIES

- 

HONEYCOMB
INSERT 50MM
ACHC50MM1
- 

SPREADER LENS
50MM
ACLL50MM1
- 

SANDBLASTED
GLASS LENS 50MM
ACSG50MM1
- 

SOFTENING LENS
50MM
ACSL50MM2



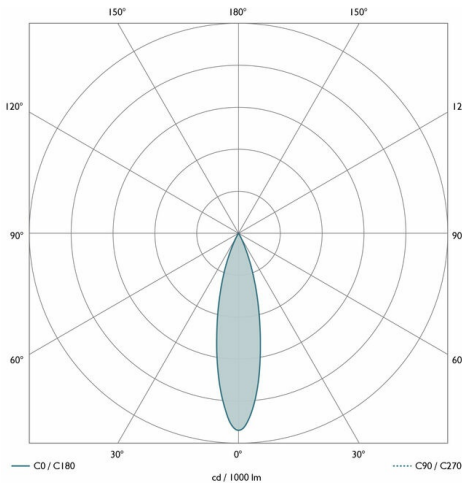
POLESPRING PURE 50 IP65 WHITE MEDIUM

KPS50BPU27ME01

LUMINAIRE REF:

PROJECT REF:

SPECIFICATION	MEDIUM
BEAM ANGLE (°)	26°
LED SOURCE LUMENS (LM)	1344 lm
LUMINAIRE LUMENS (LM)	852 lm
INTENSITY RATING (CD)	3381
POWER CONSUMPTION (W)	12W
LUMINAIRE EFFICACY (LM/W)	71 lm/W
DRIVE CURRENT (mA)	350mA
FORWARD VOLTAGE (V DC)	34V DC

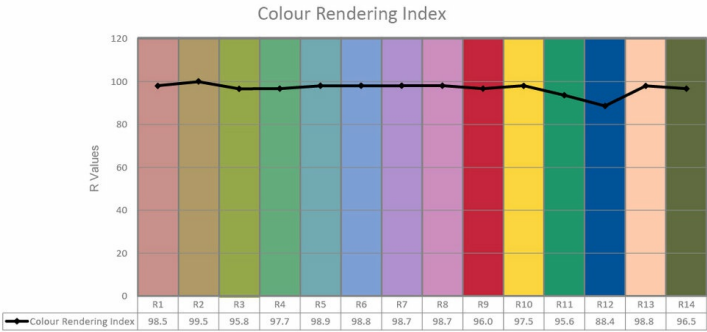
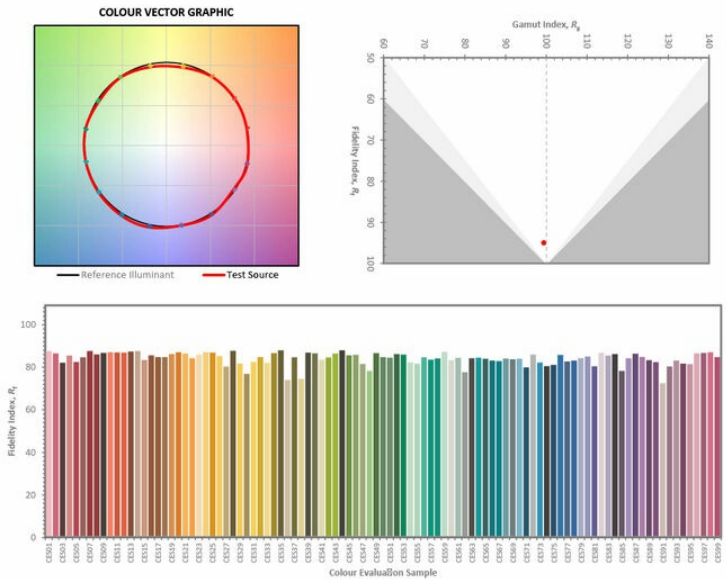


TM66	2.3 (LIA Assured Verification Score)
INGRESS RATING	IP65 (Front)/IP20 (Rear)
IMPACT RATING	N/A
COMPLIANCE	IEC/EN 60598-1
	IEC/EN 60598-2-2

COLOUR TEMPERATURE	2700K
CIE CRI AVAILABLE AS	98 Ra
IES TM-30 COLOUR FIDELITY (Rf)	>95
IES TM-30 COLOUR GAMUT (Rg)	100
BINNING	2 SDCM
LIFETIME L70/B10 (HOURS)	>50000
AMBIENT TEMPERATURE (Ta)	-20 ... +25 °C

ELECTRICAL	
SOURCE TYPE	LED
PRODUCT CLASS	Class III (SELV low voltage)
DIMMING PROTOCOL	DALI/Phase cut/1-10V

OTHER DATA	
CABLE TYPE	2 Core Silicone (180 °C)
CABLE SIZE	6.4mm OD - 2 off 24/0.2 (0.75mm2)
CABLE LENGTH	350mm
CONNECTOR TYPE	OJ-602B
WEIGHT	N/A
FIRE RATED	Yes



WWW.JOHN CULLEN LIGHTING.COM

UK +44 (0) 20 7371 9000 | Middle East & APAC +971 (0) 4 321 114 | Europe +33 (0)9 61 68 22 81

