

PURE 40 ENGINE
LEPU40ME27092

LUMINAIRE REF:

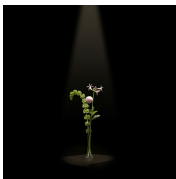
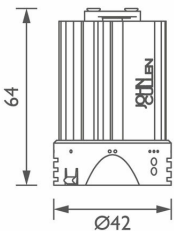
PROJECT REF:



N/A

THE NEW STANDARD OF EXCELLENCE

Our Pure 40 Engine - the new standard of excellence. Designed in Britain, the Pure 40 offers pure performance with 98CRI typ., and R9 values over 98. Independently tested by LUX-TSI.



MEDIUM

ACCESSORIES

- 

HONEYCOMB
INSERT 42MM
ACHC42MM1
- 

SPREADER LENS
42MM
ACLL42MM1
- 

SANDBLASTED
GLASS LENS 42MM
ACSG42MM1
- 

SOFTENING LENS
42MM
ACSL42MM1



WWW.JOHN CULLENLIGHTING.COM

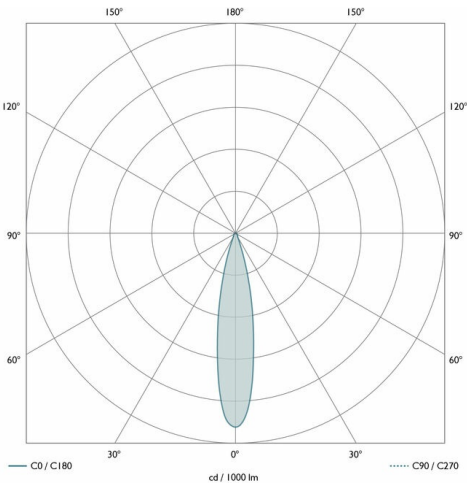
UK +44 (0) 20 7371 9000 | Middle East & APAC +971 (0) 4 321 114 | Europe +33 (0)9 61 68 22 81

PURE 40 ENGINE
LEPU40ME27092

LUMINAIRE REF:

PROJECT REF:

SPECIFICATION	MEDIUM
BEAM ANGLE (°)	21°
LED SOURCE LUMENS (LM)	680
LUMINAIRE LUMENS (LM)	N/A
INTENSITY RATING (CD)	2677
POWER CONSUMPTION (W)	9
LUMINAIRE EFFICACY (LM/W)	65 lm/W
DRIVE CURRENT (mA)	500mA
FORWARD VOLTAGE (V DC)	18V DC

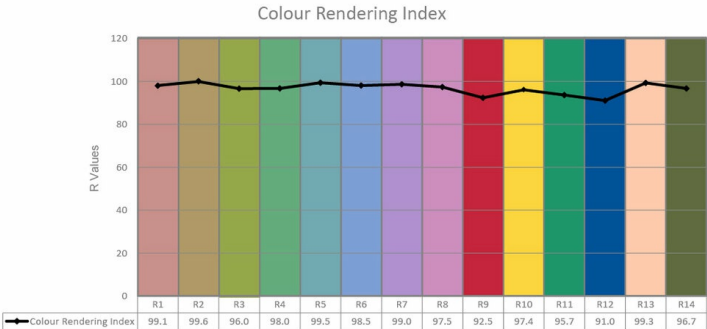


TM66	2.3 (LIA Assured Verification Score)
INGRESS RATING	IP20
IMPACT RATING	N/A
COMPLIANCE	IEC/EN 62031:2020

COLOUR TEMPERATURE	2700K
CIE CRI AVAILABLE AS	98 Ra
IES TM-30 COLOUR FIDELITY (Rf)	95
IES TM-30 COLOUR GAMUT (Rg)	95
BINNING	2 SDCM
LIFETIME L70/B10 (HOURS)	>50000
AMBIENT TEMPERATURE (Ta)	Please check the data sheet of the intended product to use with

ELECTRICAL	
SOURCE TYPE	LED
PRODUCT CLASS	Class III (SELV low voltage)
DIMMING PROTOCOL	DALI dimmable
	1-10V dimmable
	Mains dimmable (phase cut dimming)
	Switched

OTHER DATA	
CABLE TYPE	2 Core Silicone (180 °C)
CABLE SIZE	6.4mm OD - 2 off 24/0.2 (0.75mm2)
CABLE LENGTH	300mm
CONNECTOR TYPE	OJ-602B
WEIGHT	N/A
FIRE RATED	N/A



WWW.JOHN CULLENLIGHTING.COM

UK +44 (0) 20 7371 9000 | Middle East & APAC +971 (0) 4 321 114 | Europe +33 (0)9 61 68 22 81

