

POLESPRING 50
LOW GLARE DIRECTIONAL HIGH LUMEN DOWNLIGHT

LUMINAIRE REF:

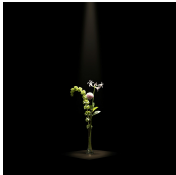
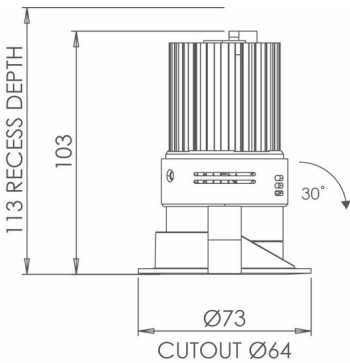
PROJECT REF:



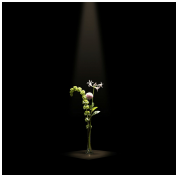
WHITE RAL 9003
TEXTURED

Our flagship Polespring 50 has been upgraded with an increased aperture which delivers market-leading performance. To minimise glare, the fitting comes with the 30° tilt and extra deep 25mm black baffle. New "clip-fit" mechanics create a modular design to create a more sustainable product. The standard white finish is now a textured matt RAL9003. The Polespring 50 uses the Pure 50 engine as standard. It is also available with the AmbiDim 50 and Tune 50.

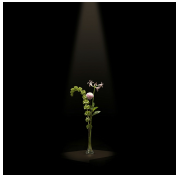
This product replaces the Waterspring 50 and Aquabeam 50 as it comes as IP65 from the front face as standard with an accessory hood so ideal for wet areas too. . NB: The cut-out of this product has increased to 64MM.



SUPERSPOT



SPOT



NARROW



MEDIUM



WIDE

ACCESSORIES



HONEYCOMB
INSERT 50MM
ACHC50MM1



SPREADER LENS
50MM
ACLL50MM1



SANDBLASTED
GLASS LENS 50MM
ACSG50MM1



SOFTENING LENS
50MM
ACSL50MM2



WWW.JOHN CULLEN LIGHTING.COM

UK +44 (0) 20 7371 9000 | Middle East & APAC +971 (0) 4 321 114 | Europe +33 (0)9 61 68 22 81



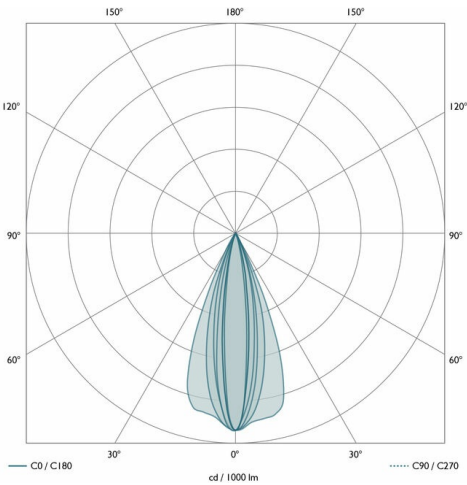
POLESPRING 50

LOW GLARE DIRECTIONAL HIGH LUMEN DOWNLIGHT

LUMINAIRE REF:

PROJECT REF:

SPECIFICATION	SUPERSPOT	SPOT	NARROW	MEDIUM	WIDE	SUPERWIDE
BEAM ANGLE (°)	11°	15°	21°	26°	34°	45°
LED SOURCE LUMENS (LM)	507 lm	998 lm	1344 lm	1344 lm	1344 lm	1344 lm
LUMINAIRE LUMENS (LM)	388 lm	765 lm	884 lm	852 lm	719 lm	688 lm
INTENSITY RATING (CD)	5803	7790	4882	3381	2044	1336
POWER CONSUMPTION (W)	6.6W	12.8W	12W	12W	12W	12W
LUMINAIRE EFFICACY (LM/W)	59 lm/W	60 lm/W	74 lm/W	71 lm/W	60 lm/W	57 lm/W
DRIVE CURRENT (mA)	350mA	350mA	350mA	350mA	350mA	350mA
FORWARD VOLTAGE (V DC)	17V DC	34V DC	34V DC	34V DC	34V DC	34V DC



TM66	2.3 (LIA Assured Verification Score)
INGRESS RATING	IP54
IMPACT RATING	N/A
COMPLIANCE	IEC/EN 60598-1
	IEC/EN 60598-2-2

COLOUR TEMPERATURE	2700K
CIE CRI AVAILABLE AS	98 Ra
IES TM-30 COLOUR FIDELITY (Rf)	>95
IES TM-30 COLOUR GAMUT (Rg)	100
BINNING	2 SDCM
LIFETIME L70/B10 (HOURS)	>50000
AMBIENT TEMPERATURE (Ta)	-20 ... +25 °C

ELECTRICAL	
SOURCE TYPE	LED
PRODUCT CLASS	Class III (SELV low voltage)
DIMMING PROTOCOL	1-10V dimmable
	DALI dimmable
	Mains dimmable (phase cut dimming)
	Switched

OTHER DATA	
Cable Type	2 Core Silicone (180 °C)
Cable Size	6.4mm OD - 2 off 24/0.2 (0.75mm2)
Cable Length	350mm
Connector Type	OJ-602B
Weight	N/A
Fire rated	Yes

