

POLEFINITY 50
DIRECTIONAL TRUE TRIMLESS DOWNLIGHT

LUMINAIRE REF:

PROJECT REF:



The Polefinity 50 is a true trimless directional architectural downlight. It has a 360° rotation and 30° tilt mechanism for more precise targeting of the beam of light. A 25mm extra deep black baffle creates a low glare, minimal lighting solution. It comes with a contractor optimised frame for installing at first fix with no special tools required. The luminaire is now IP54 as standard.

The Polefinity 50 comes with three different LED engines: Pure 50, AmbiDim 50 and Tune 50. See the LED engines for full details. Technical details below for the Pure 50. It comes as standard with a tool less plug for connecting the LED driver.



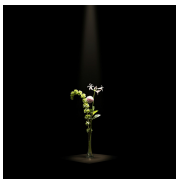
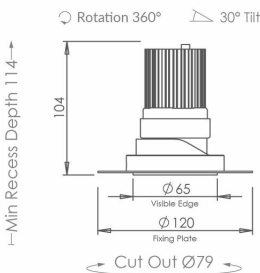
BLACK RAL 9005



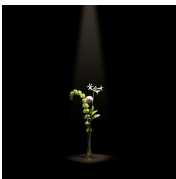
PRIMED



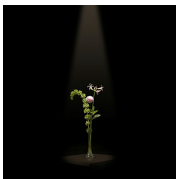
WHITE RAL 9910



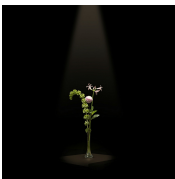
SUPERSPOT



SPOT



NARROW



MEDIUM



WIDE

ACCESSORIES



HONEYCOMB
INSERT 50MM
ACHC50MM1



SPREADER LENS
50MM
ACLL50MM1



SANDBLASTED
GLASS LENS 50MM
ACSG50MM1



SOFTENING LENS
50MM
ACSL50MM2



WWW.JOHN CULLENLIGHTING.COM

UK +44 (0) 20 7371 9000 | Middle East & APAC +971 (0) 4 321 114 | Europe +33 (0)9 61 68 22 81

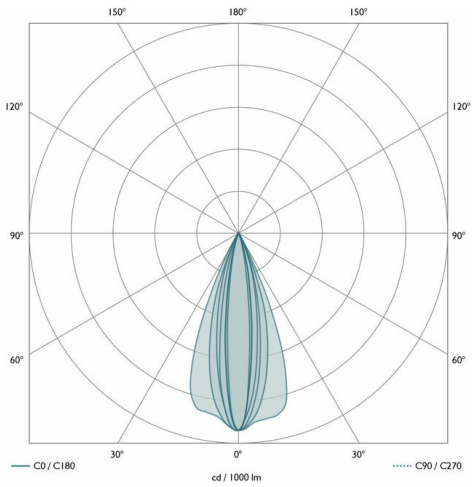


POLEFINITY 50
DIRECTIONAL TRUE TRIMLESS DOWNLIGHT

LUMINAIRE REF:

PROJECT REF:

SPECIFICATION	SUPERSPOT	SPOT	NARROW	MEDIUM	WIDE	SUPERWIDE
BEAM ANGLE (°)	11°	15°	21°	26°	34°	45°
LED SOURCE LUMENS (LM)	507 lm	998 lm	1344 lm	1344 lm	1344 lm	1344 lm
LUMINAIRE LUMENS (LM)	388 lm	765 lm	884 lm	852 lm	719 lm	688 lm
INTENSITY RATING (CD)	5803	7790	4882	3381	2044	1336
POWER CONSUMPTION (W)	6.6W	12.8W	12W	12W	12W	12W
LUMINAIRE EFFICACY (LM/W)	59 lm/W	60 lm/W	74 lm/W	71 lm/W	57 lm/W	60 lm/W
DRIVE CURRENT (mA)	350mA	350mA	350mA	350mA	350mA	350mA
FORWARD VOLTAGE (V DC)	18V DC	36V DC	36V DC	36V DC	36V DC	36V DC

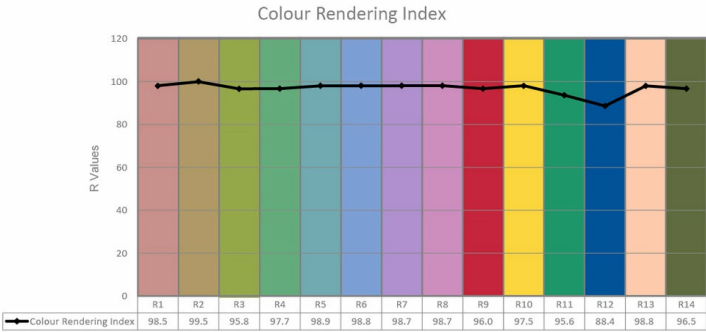
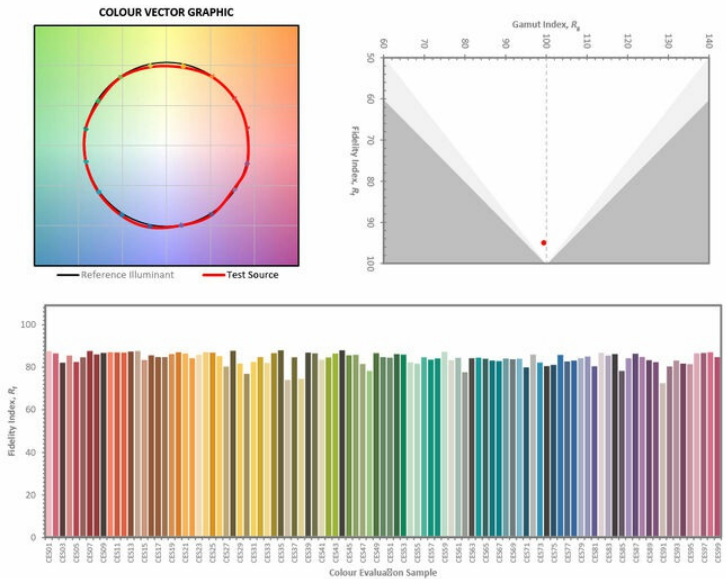


TM66	2.3 (LIA Assured Verification Score)
INGRESS RATING	IP54
IMPACT RATING	IK03
COMPLIANCE	IEC 60598-1:2014
	AMD1:2017
	IEC 60598-2-2:2011

COLOUR TEMPERATURE	2700K
CIE CRI AVAILABLE AS	98 Ra
IES TM-30 COLOUR FIDELITY (Rf)	N/A
IES TM-30 COLOUR GAMUT (Rg)	>98
BINNING	2 SDCM
LIFETIME L70/B10 (HOURS)	>50000
AMBIENT TEMPERATURE (Ta)	-20 ... +25 °C

ELECTRICAL	
SOURCE TYPE	LED
PRODUCT CLASS	Class III (SELV low voltage)
DIMMING PROTOCOL	DALI dimmable
	1-10V dimmable
	Mains dimmable (phase cut dimming)
	Switched

OTHER DATA	
CABLE TYPE	2 Core Silicone (180 °C)
CABLE SIZE	6.4mm OD - 2 off 24/0.2 (0.75mm2)
CABLE LENGTH	300mm
CONNECTOR TYPE	OJ-602B
WEIGHT	N/A
FIRE RATED	Yes



WWW.JOHN CULLEN LIGHTING.COM
UK +44 (0) 20 7371 9000 | Middle East & APAC +971 (0) 4 321 114 | Europe +33 (0)9 61 68 22 81

