

WALLACE 4520 BLACK
WA4520021

LUMINAIRE REF:

PROJECT REF:

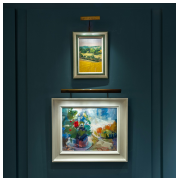
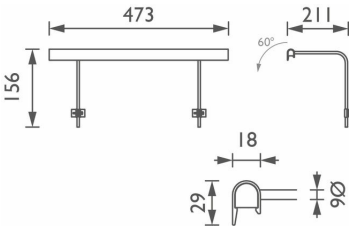


BLACK

SLIM-LINE BLACK LED PICTURE LIGHT

The Wallace Picture Light uses cutting-edge technology to provide an even distribution of light to precisely focus on your whole canvas. With an exceptionally high CRI of 97 (R9 value of 90), you can be sure that the true colours of your art will be seen at night. This low glare, easy to install picture light can be mounted both on the wall or the frame. The unique discreet shape shields the light from all angles to minimise glare

The Wallace Picture Light comes with six different head sizes and four arm lengths to fit your art more precisely. Use the chart or ask sales to help select the best size to light your picture. Independently tested by the LIA.



EXTRA WIDE



WWW.JOHN CULLEN LIGHTING.COM

UK +44 (0) 20 7371 9000 | Middle East & APAC +971 (0) 4 321 114 | Europe +33 (0)9 61 68 22 81



WALLACE 4520 BLACK
WA4520021

LUMINAIRE REF:

PROJECT REF:

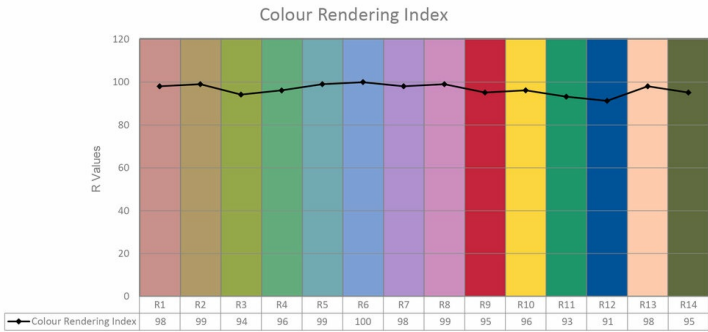
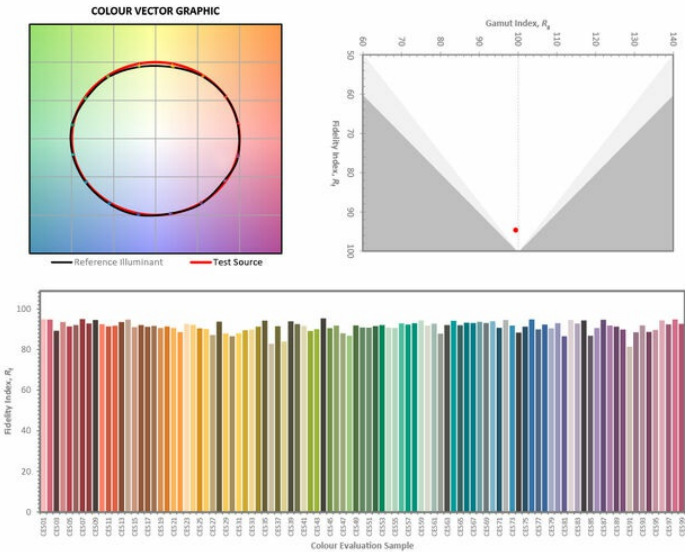
| SPECIFICATION | EXTRA WIDE |
|---------------------------|------------|
| BEAM ANGLE (°) | Wide |
| LED SOURCE LUMENS (LM) | 515 lm |
| LUMINAIRE LUMENS (LM) | 464 lm |
| INTENSITY RATING (CD) | N/A |
| POWER CONSUMPTION (W) | 6W |
| LUMINAIRE EFFICACY (LM/W) | 80 lm/W |
| DRIVE CURRENT (mA) | 350mA |
| FORWARD VOLTAGE (V DC) | 16.5V DC |
| | |
| | |
| | |

| | |
|----------------|---------------------|
| INGRESS RATING | IP20 |
| IMPACT RATING | IK03 |
| COMPLIANCE | IEC/EN 60598-1:2015 |

| | |
|--------------------------------|---------------------|
| COLOUR TEMPERATURE | 2700K |
| CIE CRI AVAILABLE AS | >95 Ra |
| IES TM-30 COLOUR FIDELITY (Rf) | 97 |
| IES TM-30 COLOUR GAMUT (Rg) | >90 |
| BINNING | 2 SDCM (Equivalent) |
| LIFETIME L70/B10 (HOURS) | >50000 |
| AMBIENT TEMPERATURE (Ta) | -20 ... +35 °C |

| ELECTRICAL | |
|------------------|------------------------------------|
| SOURCE TYPE | LED |
| PRODUCT CLASS | Class III (SELV low voltage) |
| DIMMING PROTOCOL | 1-10V dimmable |
| | DALI dimmable |
| | Mains dimmable (phase cut dimming) |

| OTHER DATA | |
|----------------|-----------------------|
| Cable Type | 2 Core PTFE (200 °C) |
| Cable Size | 2 off 7/0.2 (0.22mm2) |
| Cable Length | 300mm |
| Connector Type | N/A |
| Weight | 500g |
| Fire rated | N/A |



WWW.JOHN CULLEN LIGHTING.COM

UK +44 (0) 20 7371 9000 | Middle East & APAC +971 (0) 4 321 114 | Europe +33 (0)9 61 68 22 81

