

WALLACE 3020 ANTIQUE BRASS
WA3020041

LUMINAIRE REF:

PROJECT REF:

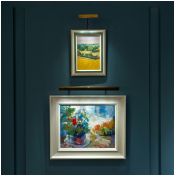
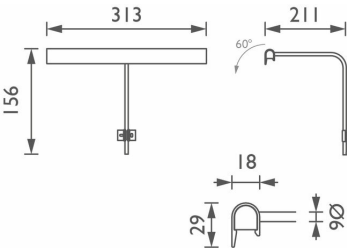


ANTIQUÉ BRASS

SLIM-LINE ANTIQUÉ BRASS LED PICTURE LIGHT

The Wallace Picture Light uses cutting-edge technology to provide an even distribution of light to precisely focus on your whole canvas. With an exceptionally high CRI of 97 (R9 value of 90), you can be sure that the true colours of your art will be seen at night. This low glare, easy to install picture light can be mounted both on the wall or the frame. The unique discreet shape shields the light from all angles to minimise glare

The Wallace Picture Light comes with six different head sizes and four arm lengths to fit your art more precisely. Use the chart or ask sales to help select the best size to light your picture. Independently tested by the LIA.



EXTRA WIDE



WWW.JOHN CULLEN LIGHTING.COM

UK +44 (0) 20 7371 9000 | Middle East & APAC +971 (0) 4 321 114 | Europe +33 (0)9 61 68 22 81



WALLACE 3020 ANTIQUE BRASS
WA3020041

LUMINAIRE REF:

PROJECT REF:

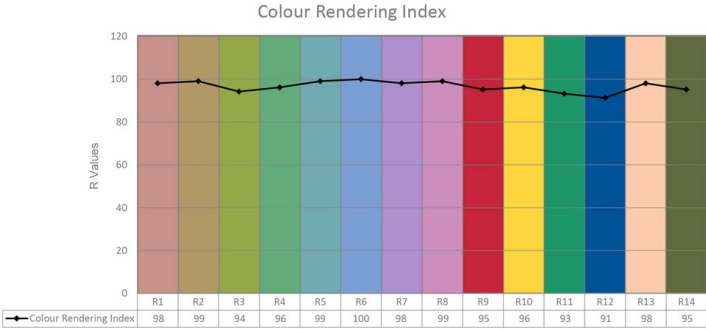
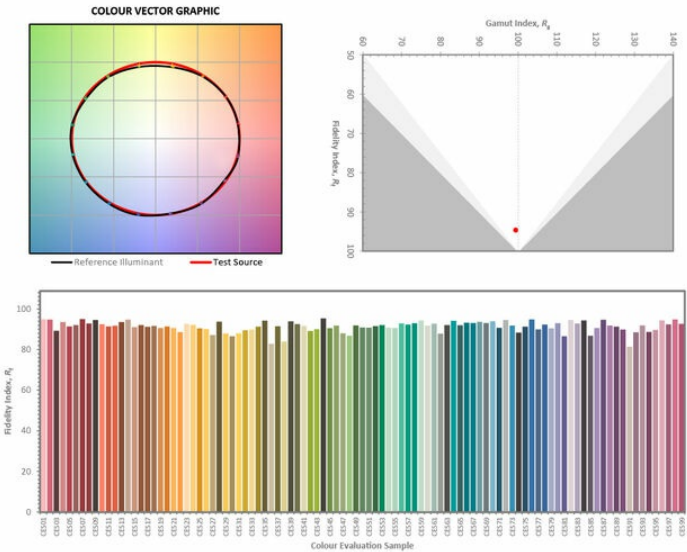
SPECIFICATION	EXTRA WIDE
BEAM ANGLE (°)	Wide
LED SOURCE LUMENS (LM)	344 lm
LUMINAIRE LUMENS (LM)	309 lm
INTENSITY RATING (CD)	N/A
POWER CONSUMPTION (W)	4W
LUMINAIRE EFFICACY (LM/W)	80 lm/W
DRIVE CURRENT (mA)	350mA
FORWARD VOLTAGE (V DC)	11V DC

INGRESS RATING	IP20
IMPACT RATING	IK03
COMPLIANCE	IEC/EN 60598-1:2015

COLOUR TEMPERATURE	2700K
CIE CRI AVAILABLE AS	>95 Ra
IES TM-30 COLOUR FIDELITY (Rf)	97
IES TM-30 COLOUR GAMUT (Rg)	>90
BINNING	2 SDCM (Equivalent)
LIFETIME L70/B10 (HOURS)	>50000
AMBIENT TEMPERATURE (Ta)	-20 ... +35 °C

ELECTRICAL	
SOURCE TYPE	LED
PRODUCT CLASS	Class III (SELV low voltage)
DIMMING PROTOCOL	1-10V dimmable
	DALI dimmable
	Mains dimmable (phase cut dimming)

OTHER DATA	
Cable Type	2 Core PTFE (200 °C)
Cable Size	2 off 7/0.2 (0.22mm2)
Cable Length	300mm
Connector Type	N/A
Weight	N/A
Fire rated	N/A



WWW.JOHN CULLEN LIGHTING.COM

UK +44 (0) 20 7371 9000 | Middle East & APAC +971 (0) 4 321 114 | Europe +33 (0)9 61 68 22 81

